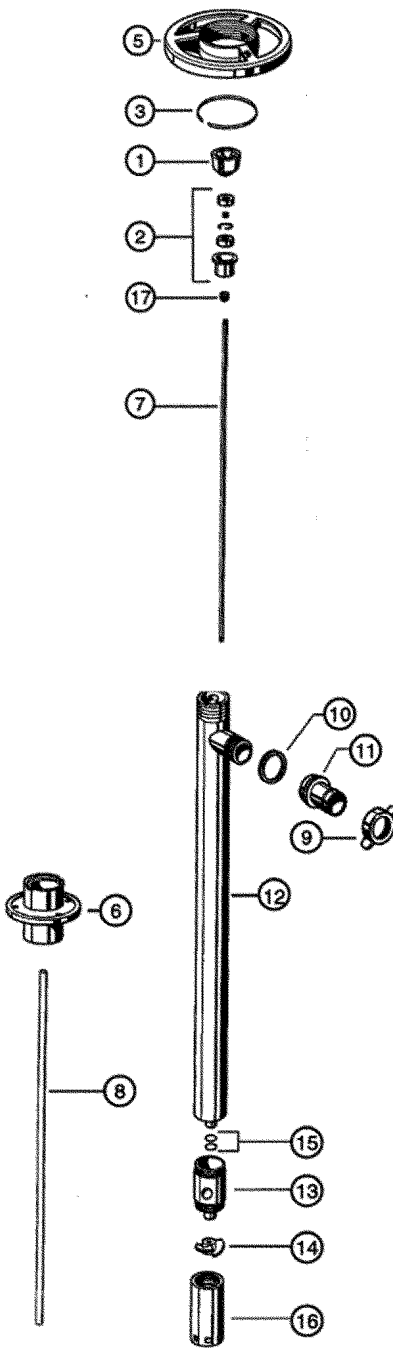


## 316 STAINLESS STEEL PUMP TUBE SERIES



ITEM NUMBER	DESCRIPTION	PART NUMBER
1*	Pump coupling	<b>1004</b>
2*	Bearing unit assembled — 2 each Viton shielded bearings, spacer, snap ring, bearing can	<b>1038</b>
3*	Snap ring	<b>1508</b>
5*	Hand wheel	<b>1842</b>
6	Connection flange	<b>2000</b>
7	Drive shaft	27" (700 mm) <b>2027</b> 39" (1000 mm) <b>2028</b> 47" (1200 mm) <b>2029</b> 60" (1400 mm) <b>2709</b> 72" (1800 mm) <b>2710</b>
8	TFE guide sleeve	27" (700 mm) <b>2031</b> 39" (1000 mm) / 47" (1200 mm) <b>2032</b> 60" (1400 mm) <b>2711</b> 72" (1800 mm) <b>2712</b>
9	Wing nut	<b>2068</b>
10	TFE seal	<b>2195</b>
11	Hose barb, 1" (25 mm)	<b>2196</b>
12	Inner/outer tube assembly	27" (700 mm) <b>2700</b> 39" (1000 mm) <b>2701</b> 47" (1200 mm) <b>2702</b> 60" (1400 mm) <b>2713</b> 72" (1800 mm) <b>2714</b>
13	Pump housing with carbon bushing	<b>2704</b>
14	TFE impeller High pressure impeller	<b>2706</b> <b>4608 HH</b>
15	"O"-ring, Viton, 2 per set	<b>2707</b>
16	Pump foot High pressure pump foot	<b>2708</b> <b>2708 HH</b>
17	V-Seal - TFE	<b>4000</b>

\*Parts interchange with all pump tubes.

**!** Read and understand operating and safety instructions before operating any Standard Pump.