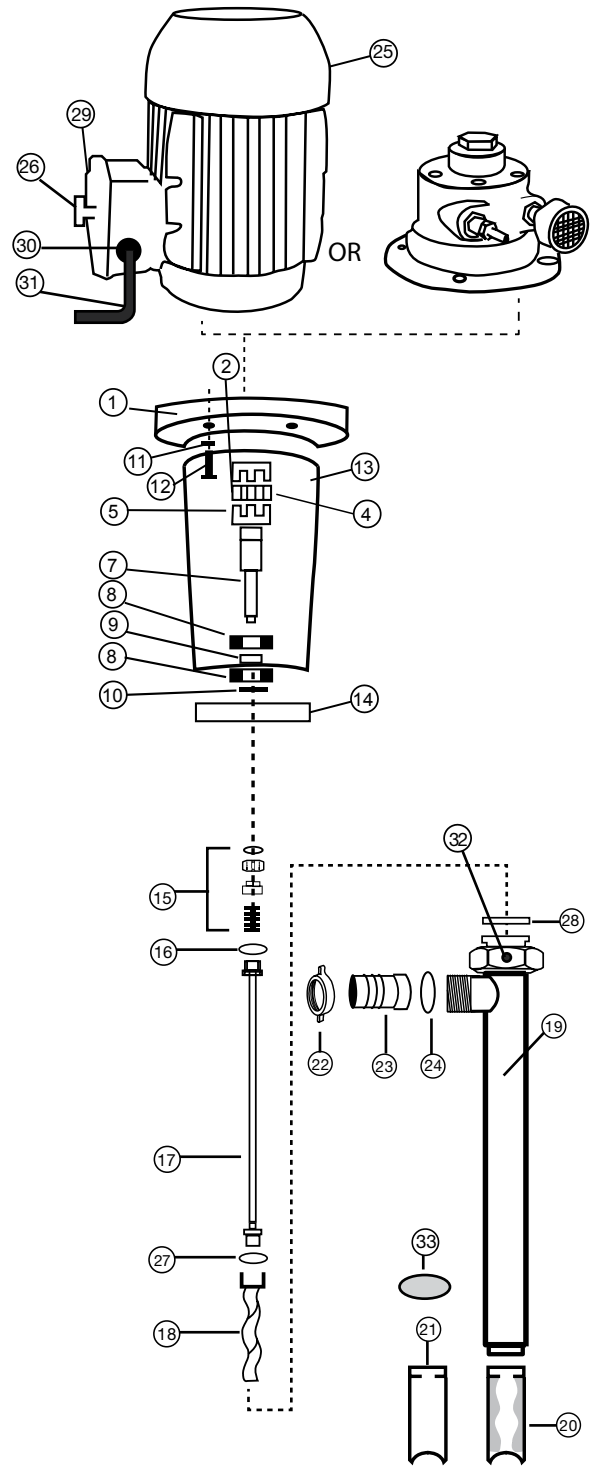


SP-700DD INDUSTRIAL SERIES SPARE PARTS

ITEM #	DESCRIPTION	PART#
1	Flange Sizes	
	SP-500 model	761
	SP-510 & SP-520 models (SP-520 requires (2) flanges)	760
	SP-A4 model	760
	SP-A6 & SP-A8 models	762
2	Motor Coupling	
	SP-500 & SP-A8 models- 24mm	740
	SP-4 model - 14mm	744
	SP-A6 model - 18 mm	747
	SP-510 & SP-520 models - 28mm	746
3	Coupling Key -- (not shown)	
	SP-A4 model - 5 mm X 20 mm	840
	SP-A6 model - 6 mm X 20 mm	841
	SP-A8 model - 8 mm X 20 mm	842
	SP-500, SP-510 & SP-520 models - 8 mm X 30 mm	844
4	Coupling Insert	745
5	Pump Coupling- 24mm	740
6	Key- Pump Coupling-8 mm X 25 (not shown)	844
7	Bearing Shaft	750
8	Bearing	751
9	Bearing Spacer	752
10	Bearing Clip	753
11	Washer (4 required)	755
12	Bolt (4 required)	756
13	Bearing Housing, Aluminum	754
14	Mechanical Seal Bushing	702
15	Mechanical Seal, SIC	703
16	Gasket	
	PTFE	735
17	Drive Shaft	
	Pump Sizes - SP-751-27,SP-752-27,SP-1851-27	704
	Pump Size - SP-1851-39	705
	Pump Sizes -SP-751-39,SP-752-39,SP-1851-47	706
	Pump Sizes - SP-751-47,SP-752-47	707
18	Rotor	
	Size 751	708
	Size 752	709
	Size 1851	710
19	Outer Tube Assembly	
	Pump Sizes - SP-751-27,SP-752-27,SP-1851-27	770
	Pump Size - SP-1851-39	771
	Pump Sizes -SP-751-39,SP-752-39,SP-1851-47	772
	Pump Sizes - SP-751-47,SP-752-47	773
20	Stator	
	BUNA*	
	Size 751	713
	Size 752	714
	Size 1851	715
	VITON*	
	Size 751	719
	Size 752	720
	Size 1851	721
	PTFE	
	Size 751 stator only	722
	Size 752	723
	Size 1851	724
21	Stator Tube	
	Size 751	774
	Size 752	775
	Size 1851	776
22	Wing Nut	727
23	Hose Barb	
	1.25 (32 mm)	728
	1.50 (38 mm)	729
24	TFE O-Ring	730
	Buna O-Ring	730B
	Viton O-Ring	730V
25	Motor	PAGE 8
26	DD Series Motor Switch	570
27	Gasket PTFE	731
28	Gasket BUNA	737
	PTFE	738
	Viton	739
29	Switch Cover	571
30	Strain Relief	572
31	Power Cord 16 ft (5m)	8708
32	Set Screw	757
33	SS Ring	0016



* Includes Stator & Stator Tube (#21)