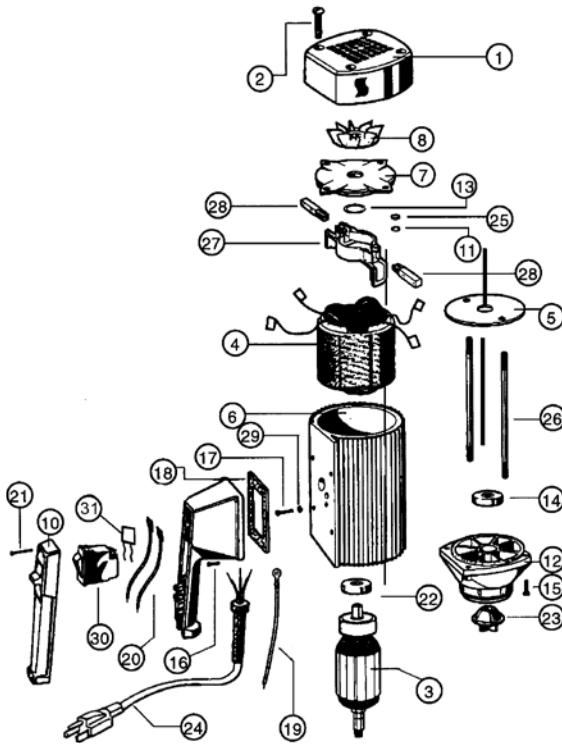


**8500, 8500BL, 8501, 8501BL, 8513, 8513BL, 8514, 8514BL**  
**SPARE PARTS**



ITEM NUMBER	DESCRIPTION	PART NUMBER
1	Motor cover	<b>3000</b>
2	Screw	<b>3130</b>
3	Armature	110-120V <b>3502</b> 220-240V <b>3701</b>
4	Stator	110-120V <b>3503</b> 220-240V <b>3702</b>
5	Guide disc	<b>3504</b>
6	Motor housing	<b>3510</b>
7	Bearing cover	<b>3511</b>
8	Fan	<b>3512</b>
10*	Switch cover	<b>8002</b>
11*	Lock washer	<b>8071</b>
12*	Lower housing	<b>8100</b>
13*	Wave washer	<b>8125</b>
14*	Ball bearing	<b>8126</b>
15	Screw	<b>8130</b>
16A*	Screw for 110-120V	<b>8131</b>
16B*	Screw for 220-240V	<b>8131LVR</b>
17*	Ground screw	<b>8162</b>
18*	Gasket	<b>8167</b>
	Low voltage release (for 220-240V)	<b>8167LVR</b>
19	Earthing Lead	<b>8183</b>
20	Lead	<b>8185</b>
21*	Screw	<b>8220</b>
22	Ball bearing	<b>8331</b>
23*	Motor coupling	<b>8333</b>
24*	Power cord w/strain relief & plug	110-120V <b>8360</b> 220-240V <b>8705</b>
25*	Hexagon nut	<b>8448</b>
26	Rod connector	<b>3703</b>
27*	Brush holder	<b>8508</b>
28*	Carbon brush	110-120V <b>8509</b> 220-240V <b>8703</b>
29*	Star washer	<b>8511</b>
30*	Overload switch, 8.5 amp 110-120V	<b>8611</b>
	5 amp 220-240V low voltage release	<b>8704LVR</b>
31	EMI Filter	<b>8003</b>

\*Parts interchange with all Standard electric motors

**⚠ SP-ENC open motor should not be used to pump flammables.**